

# IT INFRASTRUCTURE SOLUTIONS

IDF TO MDF TO CLOUD

# 2025

PRODUCT CATALOGUE

CABINETS

POWER  
DISTRIBUTION  
UNITS

ACCESSORIES





**Mesh Doors Front and Back:** Perforated front door and rear doors provide ample ventilation for servers and networking equipment. Front door perforated area is optimized with a hexagon mesh screen for higher perforation ratings and greater airflow.



**Easy Roof Access:** The cabinet roof is easily removable with pull-pin hinges for seamless access during equipment installation or when cabling is already in place. It is also reversible, allowing for the repositioning of larger cable openings to accommodate power distribution plugs and connectors.



**Efficient Interior Design:** Equipment mounting rails include zero U mounting holes beside the EIA 19" mounting space which allow the installation of data distribution cable patch systems without taking up any critical equipment U-space.



**Integrated Baying Hardware:** Genxtra cabinets include pre-installed baying hardware to join racks in a row and provide additional stability. The pre-installed baying hardware includes holes for joining cabinets at center depending on the floor layout.



**Adjustable Mounting Rails:** The vertical mounting rails are adjustable to accommodate IT equipment of various depths. Clear U positions, numbered both front and back, facilitate quick and efficient equipment installation.



**Door Swing Flexibility:** The split rear doors help maximize floor space. Minimizing space requirements for access to back side of cabinet. An ideal feature for space constrained environments.

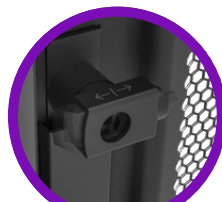
## Door Locking Options



Combo Lock



Latch Lock



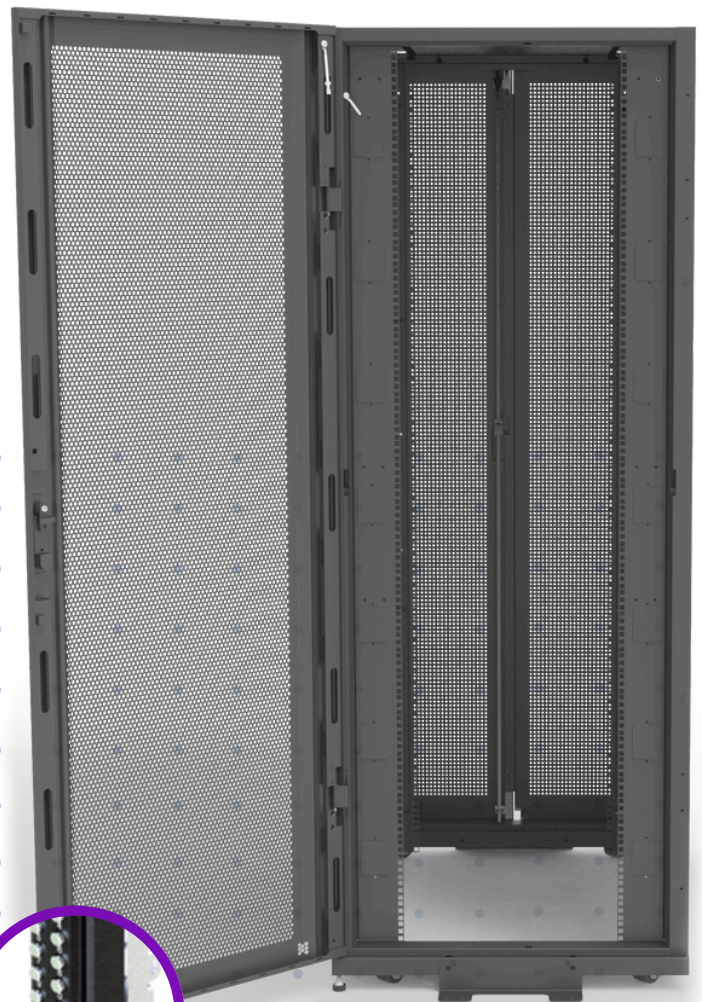
Push Lock



Smart Lock

## FULL SIZE CABINET SYSTEMS - 24U to 54U

At Genxtra, we simplify the process of tailoring your ideal data center cabinet solution. Choose from a plethora of options and exclusive accessories to craft a personalized single rack that perfectly suits your needs. Frames from 24U to 54U offer a broad range of suitable sizes. Our optional flat-pack shipping ensures convenience, and with pre-mounted components, assembly becomes both simpler and more straightforward. Discover the ease of configuring a customized data center cabinet with Genxtra fully enclosed mesh door cabinets.







**Efficient Space Utilization:** The colo cabinet provides a secure and self-contained solution for 2, 3, and 4 tenants per individual cabinet. Realize efficient utilization of floor space by minimizing unused space within the cabinet. Service more tenants and maximize capacity in your data center.



**Combo lock:** The colocation cabinet is equipped with a combination lock, adding an extra layer of security. The combo lock ensures that only authorized individuals with the correct combination can gain access to the cabinet, further protecting the valuable equipment and data housed within.



**Unique Secure Cable Channels:** One of the most distinctive features of this colocation cabinet rack is the inclusion of secure cable channels located at the back of each compartment. These channels provide a dedicated pathway for cables, ensuring proper organization and management.



**Over-Under Cable Support:** Secure channels are designed to be compatible with overhead and underfloor structured cabling products, allowing for seamless integration with existing infrastructure. This feature simplifies cable routing, reduces clutter, and enhances overall cable management effectiveness.



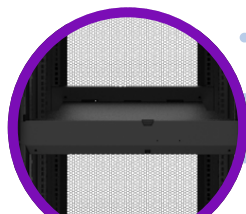
**Elasticity & Convenience:** Scale as you go for growing clients. Offer your customers attractive start up costs with the scalable solution. Smaller customer with high growth potential will value the offering that enables them to get started at a low price point and still maintain upward growth mobility.



**Multichambered Data Center Cabinet:** An invaluable asset for data center businesses aiming to support the unique requirements of small high-growth companies. It seamlessly integrates power management, accessibility, and space optimization, aligning perfectly with the agile and dynamic nature of businesses on the rise.



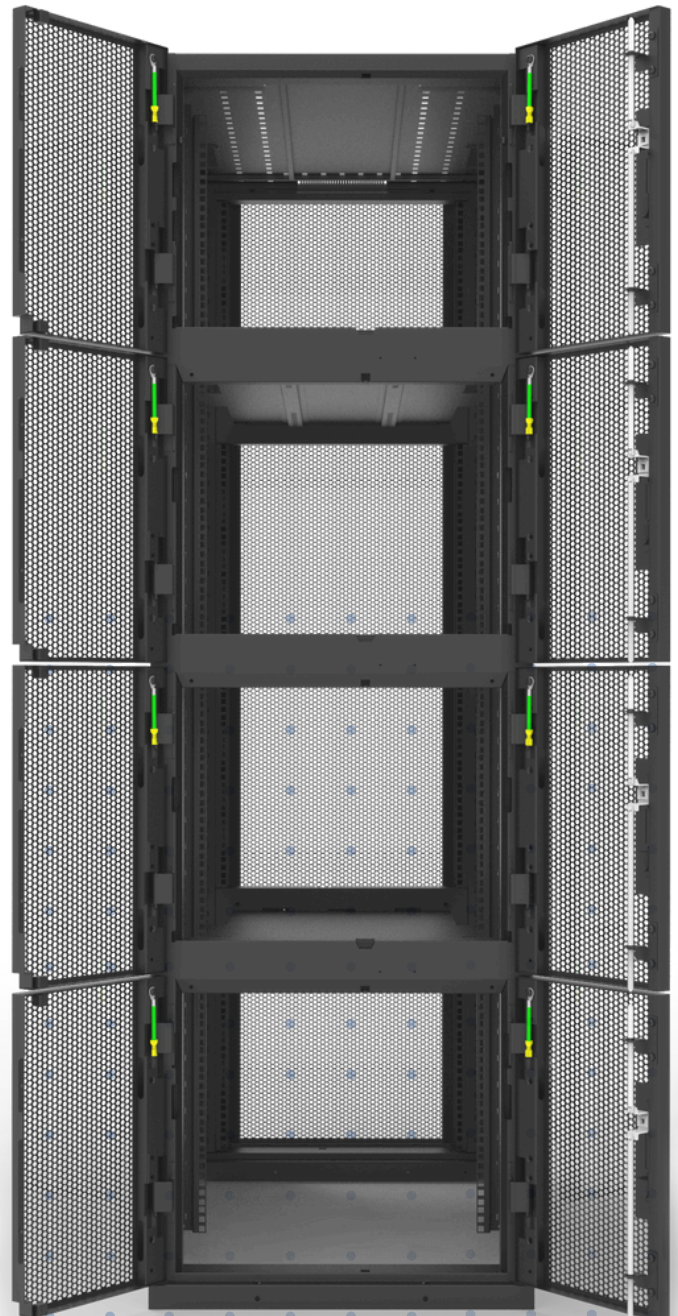
Front and Rear Door Accessibility



Integrated Security Partition Shelving

## COLO CABINET - 42U to 52U

This unique cabinet solution has all the essential features for colocation facilities. Two, three and four compartment, multi-tenant shelving and standard form factor rack rails. Each compartment has the capability to be locked, securing up to four compartments for added security. With front and rear entry access and smart cable management features, this cabinet is a smart fit for multi-tenant data center environments.





**Cost-Effective Solution:** The VED system offers a low-cost solution for managing hot exhaust air from IT enclosures. Eliminate the need for expensive additional cooling infrastructure or complex modifications.



**Easy Installation:** The VED system is designed for easy installation, specifically mounting to the top rear of Genxtra enclosures or customized to fit other brand enclosures. With a simple installation process that saves time and effort, ensuring a quick and hassle-free setup.



**Improved Cooling Efficiency:** By capturing and directing the hot exhaust air from IT enclosures, the VED system enhances the overall cooling efficiency of the data center. It helps prevent the recirculation of hot air back into the IT equipment. This economical cooling efficiency supports improved performance, reliability, and longevity of critical infrastructure.



**Extendable:** The VED system is designed to be extendable, allowing for easy expansion and adaptation to changing data center needs. This extendibility feature provides scalability and flexibility to meet the evolving demands.



**Brush Strip for Cable Pass-through:** The VED system incorporates brush strip cable management features. These brush strips create flexible and accessible openings for cables to pass through while maintaining a clean and organized appearance. Improving overall system reliability and reducing the risk of cable-related issues.



**Energy Savings:** By efficiently managing the hot exhaust air, the VED system helps optimize the cooling system's performance, potentially leading to energy savings. By reducing the workload on the cooling infrastructure, it lowers overall energy consumption, contributing to improved energy efficiency and potential cost savings in the long run.



Tight Integration for Minimal Air Spill



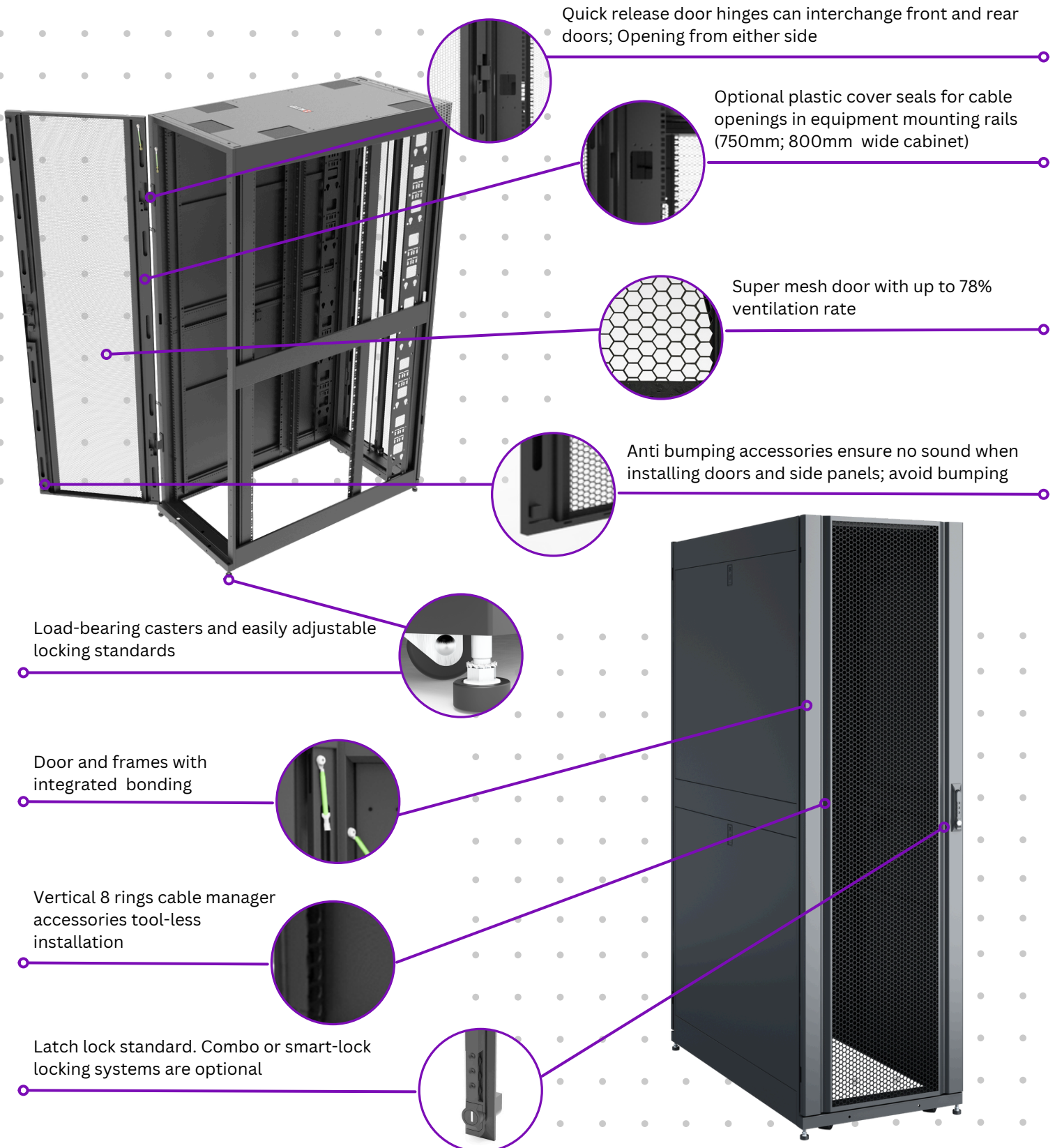
Adjustable Chimney for Easy Adaptability

## VERTICAL EXHAUST DUCT CABINET

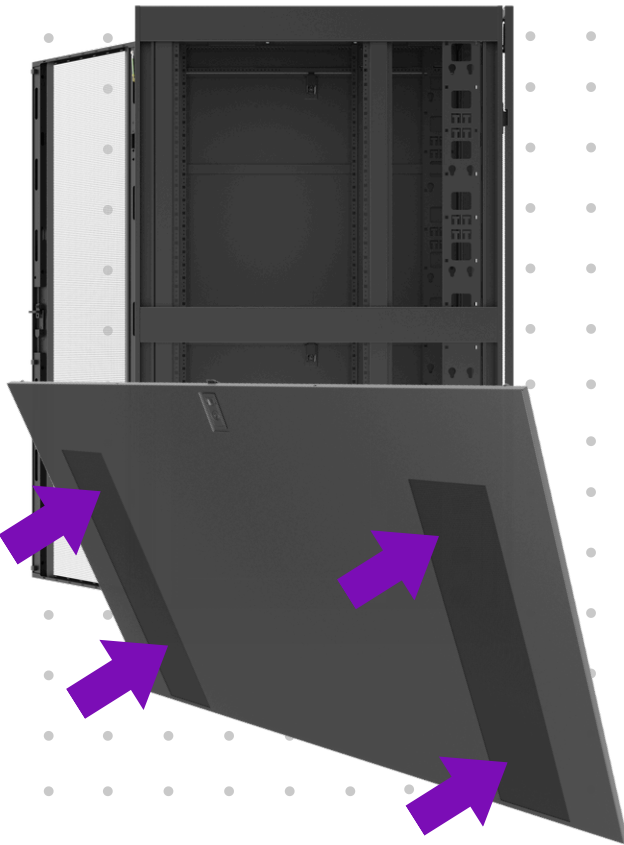
The VED system is adaptable and can be customized to work with various enclosure brands, making it a versatile solution for different data center configurations. Its compatibility with multiple enclosure types allows for flexibility in deployment, ensuring that it can be integrated seamlessly into the existing infrastructure without major modifications or disruptions.







## Innovative Design and Construction for Efficient Cable Management



### Cable Access Through Side Panels

Rectangular holes on the side panel of Genxtra cabinets for cable routing offers several beneficial uses.

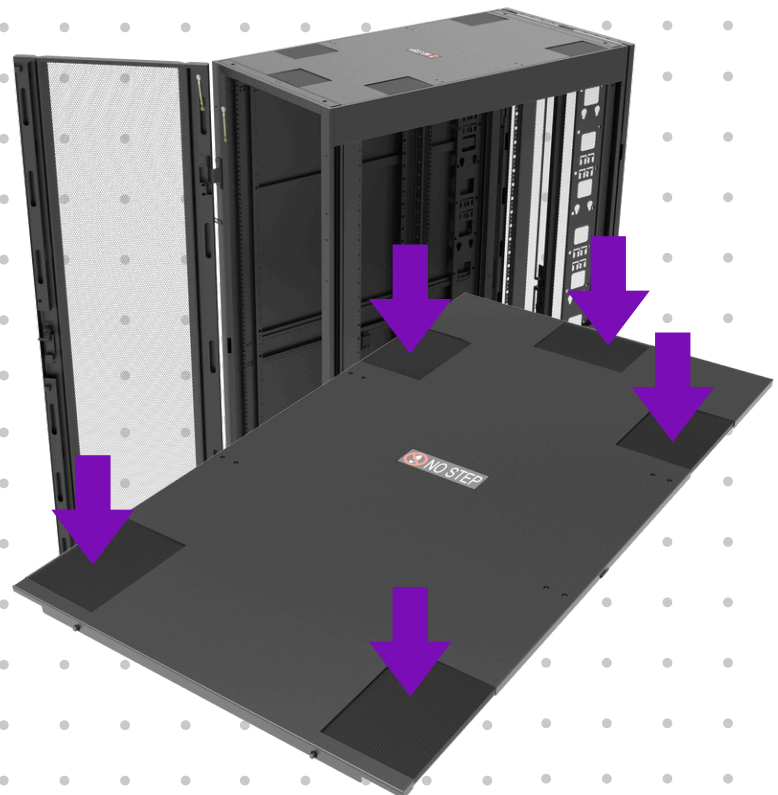
Allowing for easy and organized management of cables within the cabinet. By routing the cables through these holes, users can neatly arrange and organize their wiring, reducing clutter and making it easier to identify and access specific cables when needed.

This design feature promotes efficient use of the server cabinet space. By bringing cables from the outside into the cabinet through these openings, users can maximize the available space inside the cabinet for other equipment and components. This is particularly important in data centers and server rooms where space optimization is crucial.

### Efficient Roof Access

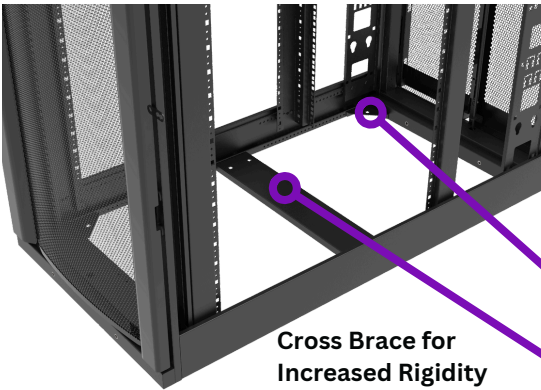
The top cover of the Genxtra cabinet is equipped with large cable management holes sealed with brush strips, which meet the requirement for bi cable routing within the cabinet.

The reinforced top design enables the installation of large-capacity cable trays or cable bridges, improving the usability of the server cabinet and offering better protection for the cables, preventing them from becoming loose or breaking.



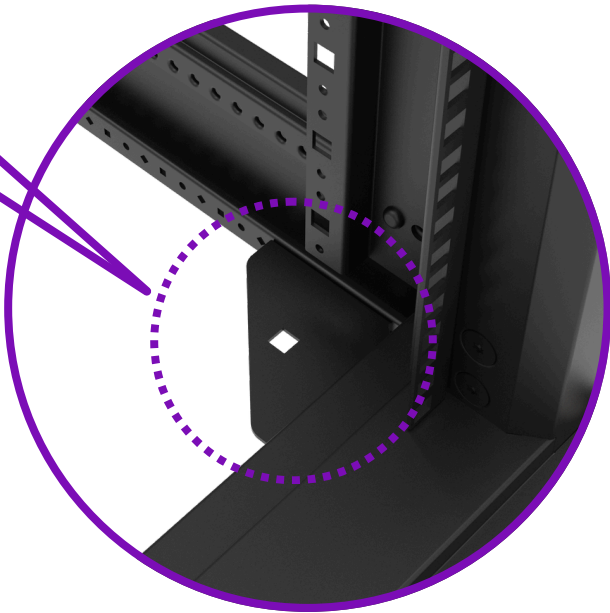


## Unique Accessories Add Strength and Security



### Corner Bracing and Mid-Floor Crossbars

The reinforced cabinet features the addition of four triangular sheet metal braces and one rectangular middle sheet cross-brace. These two construction reinforcements enhance the stability of the cabinet structure, effectively preventing any deformation issues.



### Cabinet Locking Options

Genxtra cabinets may be equipped with one of four optional locking mechanisms. All four allow quick and convenient locking of the door panel. Smart biometric keypad, three digit combination, swivel latch and push lock styles provide versatile options to meet your security requirements.



Smart Lock



Combo Lock



Latch Lock



Push Lock

### ORDER INFORMATION

MODEL NUMBER	DESCRIPTION
GX-402-400119	Smart-lock biometric with keypad
GX-300-000028	Three digit combination lock
GX-300-000001	Latch style handle lock
GX-300-700027	Push style handle lock
GX-AM-240200A	4 x Triangle braces 1 x Frame Cross brace

## Mesh Door Cabinet Enclosures



### BASE MODEL INFORMATION

MODEL NUMBER	RU	DIMENSIONS
GR3104	24U	Width = 600mm Depth = 1070mm
GR3100	42U	Width = 600mm Depth = 1070mm
GR3300B2	42U	Width = 600mm Depth = 1200mm
GR3105	45U	Width = 600mm Depth = 1070mm
GR3305	45U	Width = 600mm Depth = 1200mm
GR3107B2	48U	Width = 600mm Depth = 1070mm
GR3307B2	48U	Width = 600mm Depth = 1200mm
G3356	52U	Width = 600mm Depth = 1070mm
GR3357	52U	Width = 600mm Depth = 1200mm
GR3150B2	42U	Width = 750mm Depth = 1070mm
GR3350B2	42U	Width = 750mm Depth = 1200mm
GR3155	45U	Width = 750mm Depth = 1070mm
GR3355	45U	Width = 750mm Depth = 1200mm
GR3157B2	48U	Width = 750mm Depth = 1070mm
GR3357B2	48U	Width = 750mm Depth = 1200mm
GAR3358	52U	Width = 750mm Depth = 1200mm

## 24U to 54U with Options in Depth and Height

These versatile cabinets are perfect hyperscale data center environments. All Genxtra cabinets come standard with all the mounting brackets for zero U space PDUs, casters, reversible mesh doors, 4 lockable side panels and roof panel with six cable access ports. Unique six brace construction is sturdy with a high load capacity of 3,300lbs. Highly suitable for remote wiring closets MDF and data center applications.

### KEY FEATURES

**Versatility:** Genxtra cabinets can accommodate various types of equipment such as servers, routers, switches, etc., providing users with multiple rack sizing from 24U, 42U, 45U, 48U and 52U models. Variable depths and width formats are also available to meet every IT need. (Custom sizes upon request)

**Heat Dissipation Performance:** Genxtra cabinets are designed for maximum heat dissipation performance with our Single and Split 77% perforated doors that provide maximum airflow.

**Security:** Genxtra cabinets have safety and security measures utilizing latch key style door locks with optional combo or Biometric HID locks. Split removable side panels come standard with integrated key locks.

**Flexibility:** Genxtra cabinets have 2 sets of 19" EIA Rack Rails with front to rear adjustments allowing for full depth adjustability within the usable space. Our frame is capable of supporting up to 3,300 lbs. static weight.

**PDU Management:** Genxtra cabinets are equipped with two dual purpose full height, depth adjustable PDU / Cable Management brackets mounted in the rear of the cabinet utilizing zero U space. Button mount keyholes accommodate tool-less button mounting of rack PDUs

Need help choosing the right cabinet for your project?  
 Genxtra product specialists are available to help you  
 choose the right solution.  
 Call us for a consultation! 949-842-8450



## Multi-Tenant Colo Cabinets



### 42U to 54U with Options in Depth and Width

Genxtra colocation cabinets come in 2, 3, and 4-compartment configurations. This versatile cabinet is engineered and manufactured to the same standards as our other cabinet products, from strength-enhancing construction methods to precision manufacturing.

#### KEY FEATURES

**Efficient Space Utilization:** Genxtra colocation cabinets provide a secure and self-contained solution for 2, 3, and 4 tenants to share a single cabinet. This design enables efficient utilization of floor space in the data center by minimizing unused space within the cabinet. Accommodate more tenants in a smaller footprint.

**Enhanced Physical Security:** The colocation cabinet rack is manufactured with high-quality craftsmanship, instilling confidence in tenants that their physical infrastructure is well-protected from unauthorized access.

**Combo lock:** The colocation cabinet rack is equipped with a combo lock, adding an extra layer of security. The combo lock ensures that only authorized individuals with the correct combination can access the cabinet, protecting valuable equipment and data.

**Unique Secure Cable Channels:** One of the most distinctive features of this colocation cabinet rack is the inclusion of secure cable channels at the back of each compartment. These channels provide a dedicated pathway for cables, ensuring proper organization and management. Compatible with overhead and underfloor structured cabling products, efficiently facilitating seamless integration with existing infrastructure.

By offering efficient space utilization, enhanced physical security with a combo lock, and unique secure cable channels, the colocation cabinet rack from Genxtra stands out as an innovative solution in the industry. It addresses the needs of multiple tenants sharing a single cabinet while providing a reliable and secure environment for their IT infrastructure.

Need help choosing the right cabinet for your project?  
 Genxtra product specialists are available to help you  
 choose the right solution.  
 Call us for a consultation! 959-842-8450

BASE MODEL INFORMATION		
MODEL NUMBER	RU	DESCRIPTION
GX2-42U-600/1070	42U	600mm = Width 1070mm = Depth - 2 x Chamber
GX3-42U-600/1070	42U	600mm = Width 1070mm = Depth - 3 x Chamber
GX4-42U-600/1070	42U	600mm = Width 1070mm = Depth - 4 x Chamber
GX2-48U-600/1200	48U	600mm = Width 1200mm = Depth - 2 x Chamber
GX3-48U-600/1200	48U	600mm = Width 1200mm = Depth - 3 x Chamber
GX4-48U-600/1200	48U	600mm = Width 1200mm = Depth - 4 x Chamber
GX2-42U-750/1070	42U	750mm = Width 1070mm = Depth - 2 x Chamber
GX3-42U-750/1070	42U	750mm = Width 1070mm = Depth - 3 x Chamber
GX4-42U-750/1070	42U	750mm = Width 1070mm = Depth - 4 x Chamber
GX2-48U-750/1200	48U	750mm = Width 1200mm = Depth - 2 x Chamber
GX3-48U-750/1200	48U	750mm = Width 1200mm = Depth - 3 x Chamber
GX4-48U-750/1200	48U	750mm = Width 1200mm = Depth - 4 x Chamber
GX2-52U-750/1200	52U	750mm = Width 1200mm = Depth - 2 x Chamber
GX3-52U-750/1200	52U	750mm = Width 1200mm = Depth - 3 x Chamber
GX4-52U-750/1200	52U	750mm = Width 1200mm = Depth - 4 x Chamber

## Essential Accessories for Racks, Cabinets and Modular Data Centers

Enhance your data center setup with a wide range of certified add-on products designed for Genxtra cabinets, integrated enclosures and rack enclosures. Our accessories are designed to industry standard specifications and will interoperate with many other manufacturers cabinets and racks. Our collection includes an extensive selection of customizable accessories, ranging from innovative modular and toolless airflow management solutions to horizontal cable organizers, shelves and mounting brackets for PDUs.

### CABLE ORGANIZERS



GX-86006



GX-88001

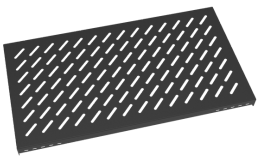


GX-86017

### ORDER INFORMATION

MODEL NUMBER	DESCRIPTION
GX-86006	Horizontal Cable Organizer 2U W/ enclosure or rack 19-inch EIA enclosure.
GX-88001	Vertical cable manager with fingers and covers.
GX-86017	Cable management accessory - Cable routed horizontally on front or back of 19-inch EIA enclosure.

### SHELVING & WIRE TROUGHS



GX-84008



GX-84002



GX-87601 (600mm)  
 GX-87701 (750mm)  
 GX-87801 (800mm)



GX-84001



GX-900-900079

### TOOL-LESS AIRFLOW BLANKS



GX-89010-1U



GX-89010-2U



GX-89010-4U

### ORDER INFORMATION

MODEL NUMBER	DESCRIPTION
GX-89010-1U	1U Black Modular Toolless Airflow Management Blanking Panel
GX-89010-2U	2U Black Modular Toolless Airflow Management Blanking Panel
GX-89010-4U	4U Black Modular Toolless Airflow Management Blanking Panel

### ORDER INFORMATION

MODEL NUMBER	DESCRIPTION
GX-84008	Fixed shelf 100-130kg black - fixed shelf for tower units, monitors, and other equipment.
GX-84001	Cantilever fixed shelf fixed for tower units, monitors, and other equipment.
GX-84002	Fixed shelf 110kg black fixed shelf to for tower units, monitors, and other equipment.
GX-87601	600mm wide cabinet top M-type wire trough
GX-87701	750mm wide cabinet top M-type wire trough
GX-87801	800mm wide cabinet top M-type wire trough
GX-900-900079	Anti-seismic bracket, anti-toppling component.





[genxtra.net](https://genxtra.net)

2025 Genxtra Communications. All rights reserved.

The content, design, and images featured in this brochure are the property of Genxtra Communications and are protected by copyright laws. Any unauthorized reproduction, distribution, or use of the materials in this brochure without the prior written consent of Genxtra Communications is strictly prohibited. Thank you for respecting our intellectual property rights.